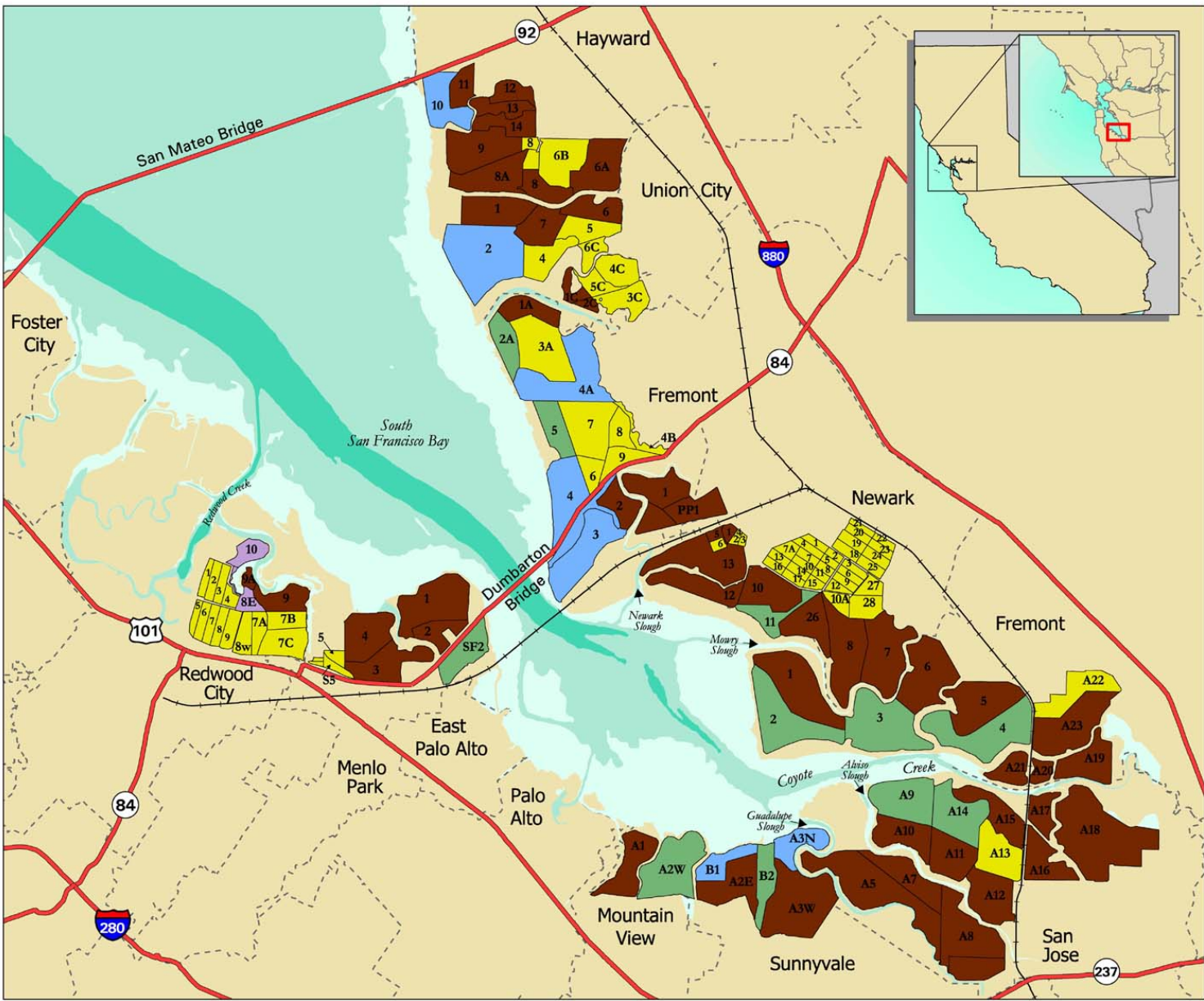


May 10, Potential Hydrologic Connections to Tides

This map identifies how tidal action might be restored to the salt ponds as part of tidal marsh restoration. Ponds with an open bay edge are the easiest to provide tidal action. Ponds with tidal connections along tributary channels can be more difficult to provide tidal action, depending on the size of the tributary channel. Ponds with no tidal connection require bringing tidal action through an adjacent pond. Tidal marsh outboard of the ponds constrains restoration because new channels need to be created across these marshes (through natural erosion and/or mechanical excavation) and this marsh loss can have adverse impacts to wildlife.



Legend

- Relatively Easy to Provide Tidal Connection**
 - Open Bay Edge, no Marsh (2,780 acres)
 - Open Bay Edge, Marsh (3,680 acres)
- Ease of Tidal Connection Depends on Size of Channel**
 - Tributary Channel, no Marsh (180 acres)
 - Tributary Channel, Marsh (14,330 acres)
- Most Difficult to Provide Tidal Connection**
 - No Tidal Edge (5,220 acres)
- City Boundaries
- Highways
- Railroad

Note: Where more than one tidal connection is possible, the more likely option is identified in this map.

