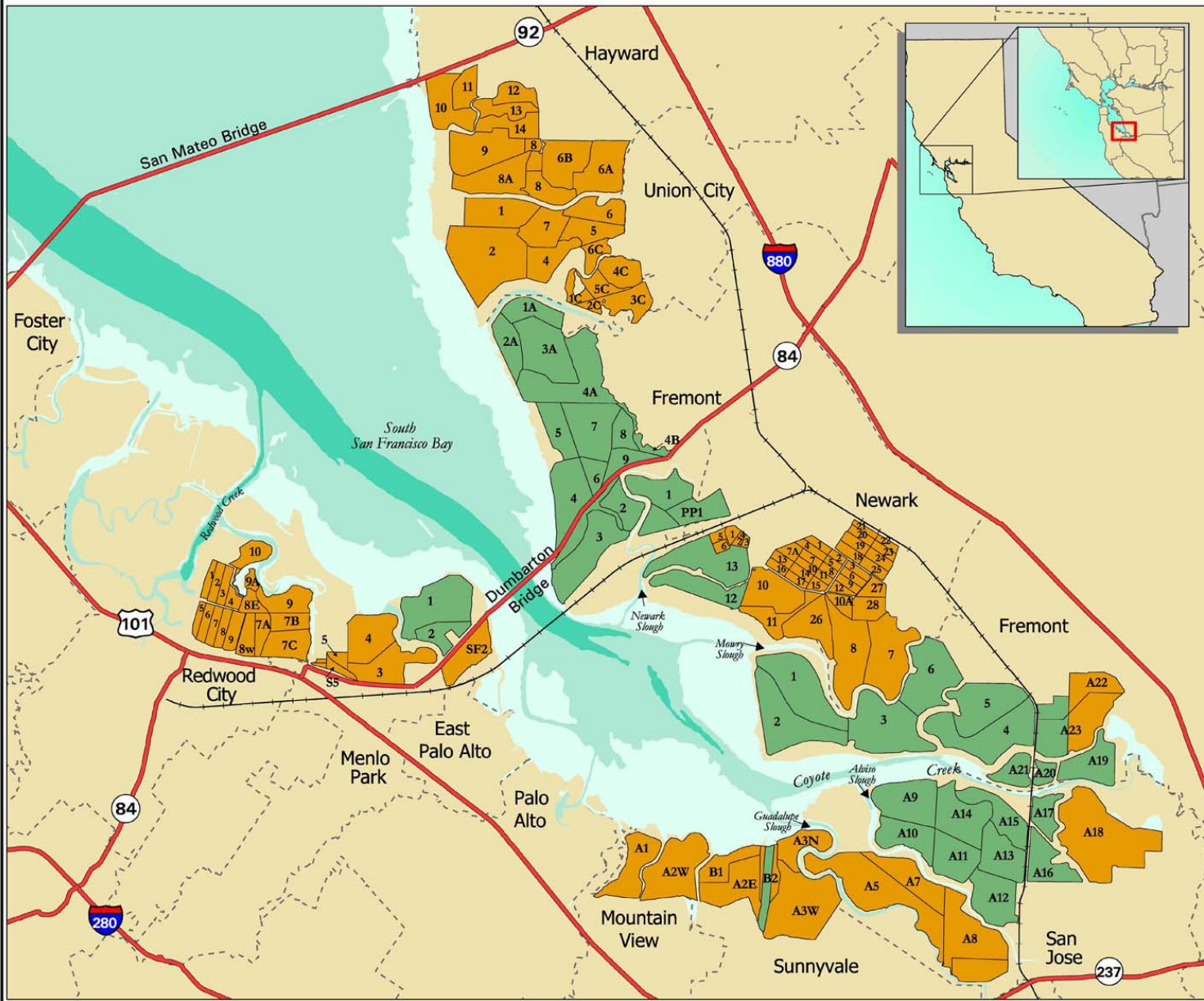


# Map 2, Land Ownership of Operating South Bay Salt Ponds

This map identifies land ownership of the South Bay salt ponds considered in this feasibility analysis. Note that Cargill produces salt on about 11,430 acres of publicly owned salt ponds. Cargill retained mineral rights for these lands under the 1979 purchase agreement that helped establish the Don Edwards San Francisco Bay National Wildlife Refuge.



**Legend**

- Owned and Operated by Cargill (14,760 acres)
- Owned by Don Edwards San Francisco Bay National Wildlife Refuge, operated by Cargill for salt production (11,430 acres)
- City Boundaries
- Highways
- Railroad



Data Sources: EcoAtlas, Cargill, USGS  
 Map Projection: CA Stateplane III, NAD83  
 Map Version 1.7 | Produced on: 03/30/01

© Stuart Siegel, 2001

